

EUROPEAN ROUNDTABLE
JUNE 12-13 2017 | LONDON



GOLD PARTNERS



**European
Palm Oil Alliance**

RECEPTION PARTNER

CRODA

SILVER PARTNERS



EXHIBITORS



ZSL
**LET'S WORK
FOR WILDLIFE**



PANEL DEBATE: DRIVING IMPACTS THROUGH INNOVATION & PARTNERSHIPS



EVOLUTION, REVOLUTION AND PARTNERSHIP: A VIEW FROM THE ISEAL ALLIANCE

Dr. Kristin Komives

Director, Impacts
@ISEALalliance

ISEAL Alliance: A Movement Of Credible And Innovative Sustainability Standards



Working together towards a world in which social, environmental and economic sustainability is the normal condition of business.

The ISEAL Secretariat's mission is to strengthen sustainability standards for the benefit of people and the environment.

- Sustainability standards are widely and increasingly used and recognised globally for catalysing improvements and operationalising sustainability.
- Our challenge today is to scale quickly and respond to concerns about our approach, while maintaining credibility and the value we provide.
- We commit to increase the effectiveness of our systems through innovation and collaboration, harnessing our unique assets to drive sustainability at all levels, and at scale.



ISEAL's Innovations Programme:

- Building commitment
- Sparking ideas
- Making connections
- Encouraging collaboration
- Providing seed funding

Highlights Of Efforts Underway

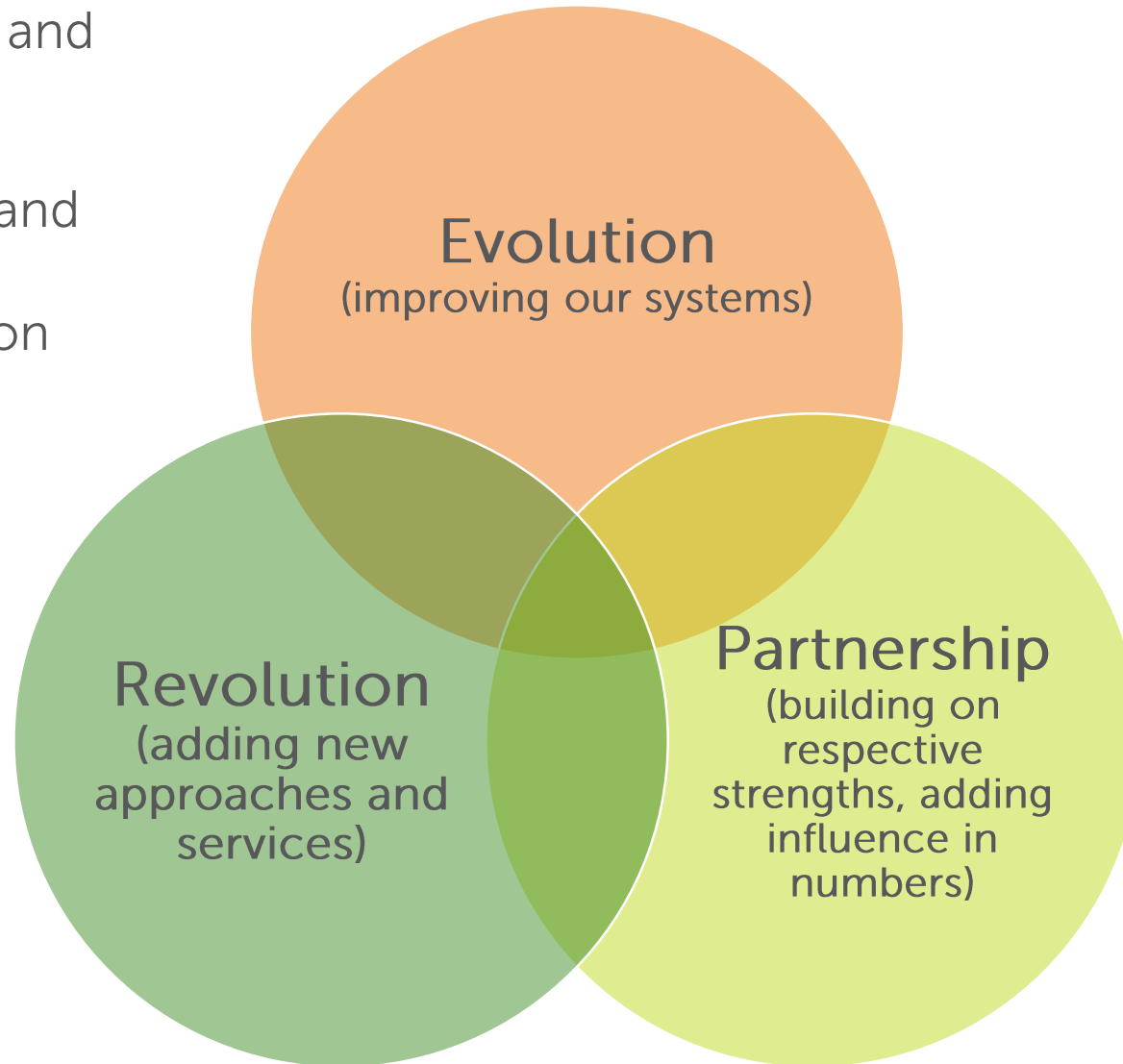


Improving risk detection and risk management

Optimizing our systems and partnerships to drive continual improvement on the ground

Exploring block chain technology

New roles as advocates, in remediation, in capacity building, in the provision of data and tailored services



ISEAL member collaborations on key sustainability issues

Global online certification 'atlas' – linking standards' data with external data

GLOBAL LIVING WAGE COALITION

- One definition, one approach to measuring living wage
- 30 living wage benchmarks calculated or in process

GLOBAL
LIVING WAGE
COALITION

INTEGRATED PEST MANAGEMENT COALITION

- Reducing the use of pesticides, with the longer-term aim of eliminating highly hazardous pesticides
- Building a pesticide database to allow users to search for pesticides and alternatives

Thank You!



Kristin Komives, Director, Impacts
Kristin@isealalliance.org

Learn more at www.iseal.org or
join us at the:



Zurich, June 27-28, 2017

EUROPEAN ROUNDTABLE
JUNE 12-13 2017 | LONDON



GOLD PARTNERS



**European
Palm Oil Alliance**

RECEPTION PARTNER

CRODA

SILVER PARTNERS



EXHIBITORS



ZSL
**LET'S WORK
FOR WILDLIFE**



RSPO AND GFW: MEASURING IN ORDER TO MANAGE

Anne Rosenbarger

World Resources Institute

Arosenbarger@wri.org
@globalforests

A satellite image of Earth from space, showing a coastline and some land features.

**REMOTE
SENSING**

A blue background with a white cloud icon in the center. Below the cloud are several small icons representing different types of computing devices and servers.

**CLOUD
COMPUTING**

A blue background with a pattern of white binary code (0s and 1s) arranged in a grid-like fashion.

BIG DATA

Making data accessible and usable...it is all about partnerships



Improving Data Quality And Management



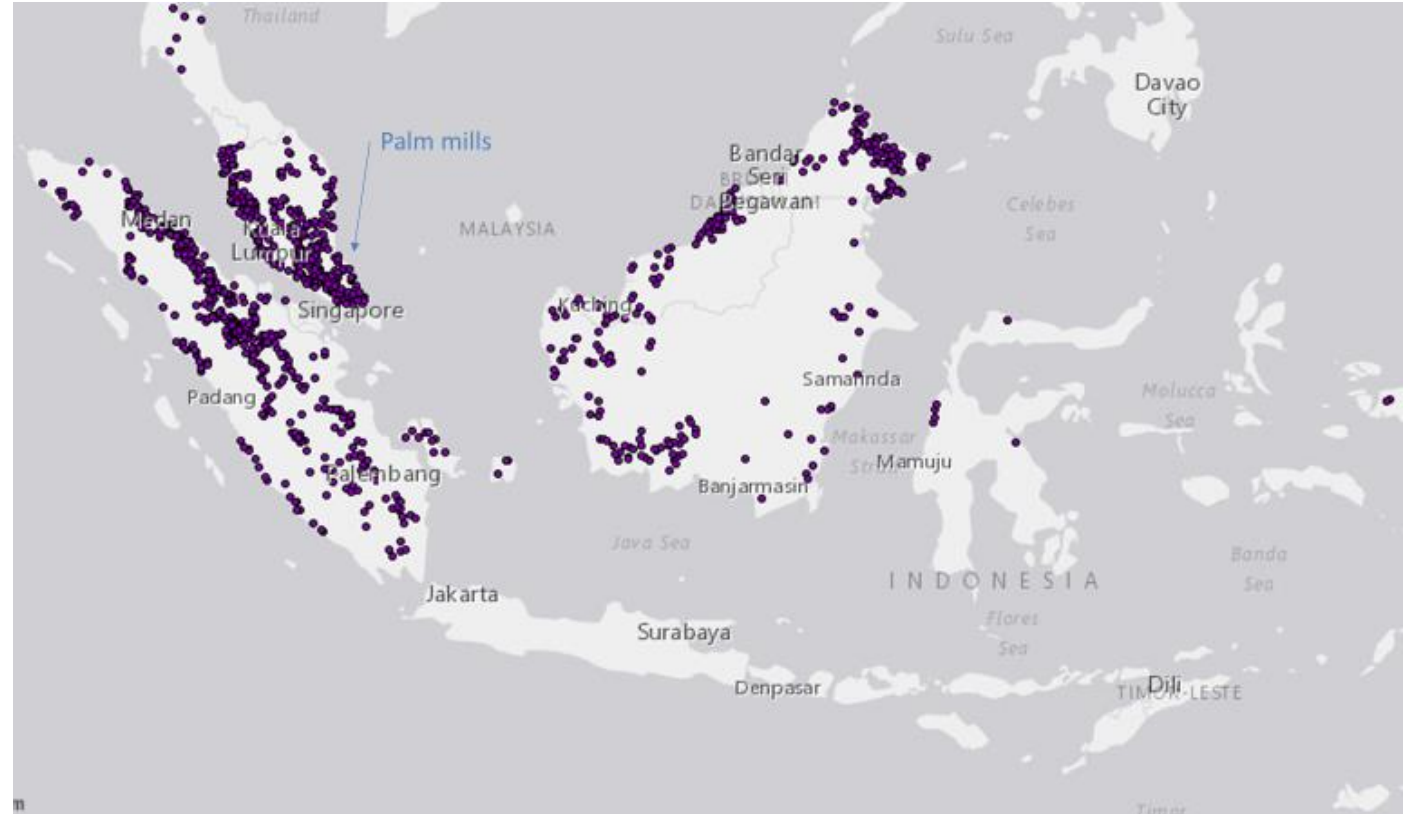
Mill location information
contributed by many companies



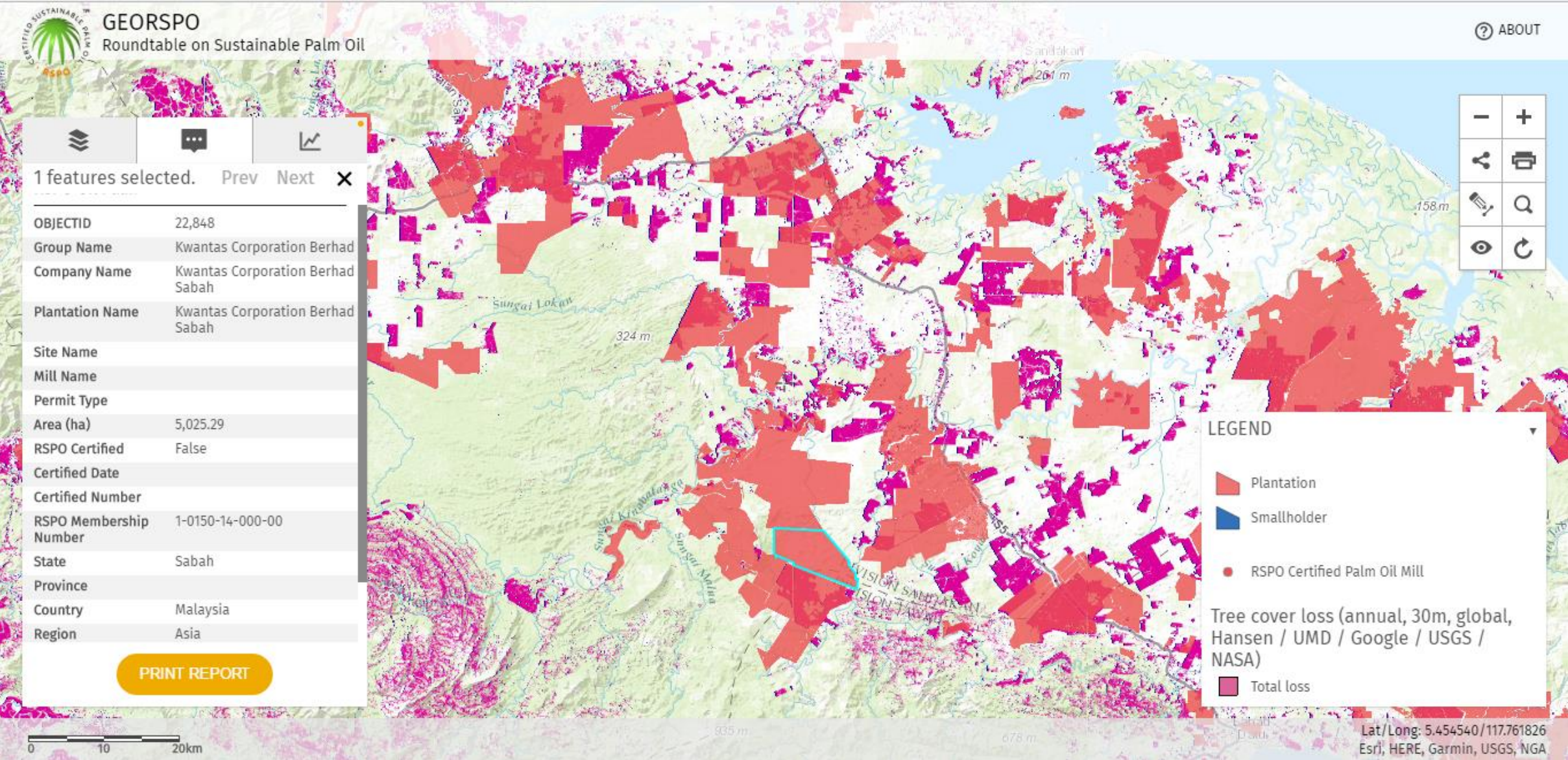
Integrate this data into a
unified global mill list



Cross-referenceable IDs for
more efficient data
management



Announcing: GeoRSPO Brought To You By GFW Map Builder



WORLD ECONOMIC FORUM

Private arms of
development
banks



Retailers



Food
processors



Traders



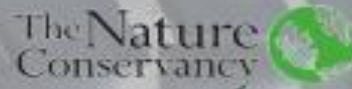
USD 777

billion

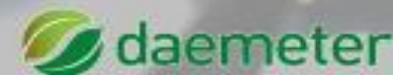
in annual revenues

= 17th economy
in the world
(Netherlands)

NGOs



Consultants



and others...

LOCATIONS

MAP

ANALYTICS

PROFILE

FOREST WATCH PRO

Locations

« Brazil Soy

Brazil

SITE CHARACTERISTICS BY PERCENT

Tree Cover Extent

77 %

Primary Forest

4 %

Protected Area

9 %

Peat

--

Intact Forest Landscape

8 %

LIST ATTRIBUTES

Total hectares

390,000

★ Flagged

17

DIAGNOSTIC

FOREST CHANGE

POLICY

COMMODITY RISK

Report

Download

Share

Dashboard All Locations

Click and drag to create hotspots

Show Lists

5 new lists shared

Report

Download

Share

ALERTS SHOWN GLAD TIMEFRAME Week Month Quarter Year

Location Alerts Map

Month to Date

- Primary Forest
- Protected Areas
- Intact Forest Landscapes
- Peat Lands

Zoom Up

Click on a bubble to zoom or flag/unflag.

LOCATIONS WITH ☐ Alerts ☐ No Alerts ☐ Flagged

DENSITY OF ALERTS
Low High

ALERTS SUMMARY

436
Locations

4,781,000
Total Hectares

325
Alerts
41%
of Locations

14
Flags w/Alerts
3%
of Locations

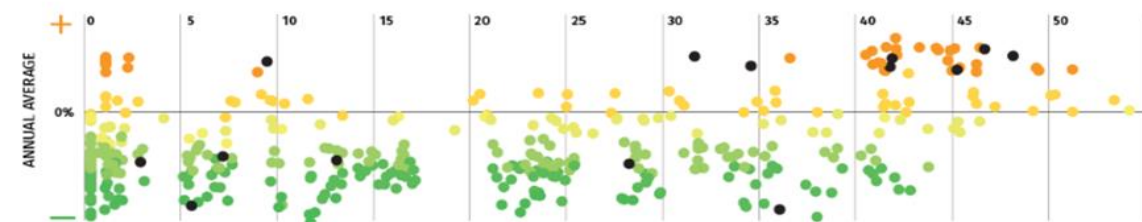
ALERTS HISTORY



Alert Intensity

ALERTS BY LOCATION VS. ANNUAL AVERAGE

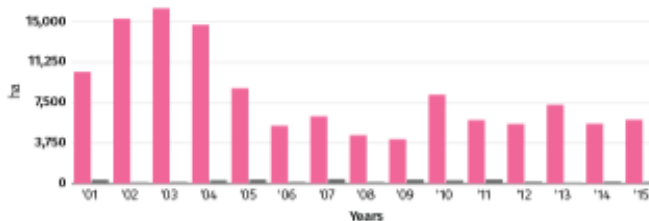
SHOW ☒ Flagged Locations



Sensitive Areas

View Map

LOSS OF FORESTS



	TOTAL LOSS ha	% of TCL
Tree Cover Loss	124,077	
Primary Forest	1,582	1%
Protected Areas	3,300	3%
Peat	--	--
Intact Forest Landscapes	7,045	6%

Select one main category and/or one sub-category.

PERCENTAGE OF AREA LOST

Tree Cover Extent	41 %
Primary Forest	10 %
Protected Areas	9 %
Peat	--
Intact Forest Landscapes	15 %

	TOTAL LOSS ha	TOTAL TREE COVER EXTENT ha
Tree Cover Loss	124,077	300,911
Primary Forest	1,582	15,600
Protected Areas	3,300	35,100
Peat	--	--
Intact Forest Landscapes	7,045	46,800

See total loss in each sensitive area category from 2001-2015 as a percentage of that area's tree cover extent in 2001. [total loss in category 2001 to 2015 / 2001 category tree cover extent]

Regions

View Map

EUROPEAN ROUNDTABLE
JUNE 12-13 2017 | LONDON



GOLD PARTNERS



European
Palm Oil Alliance

RECEPTION PARTNER

CRODA

SILVER PARTNERS



EXHIBITORS



ZSL
LET'S WORK
FOR WILDLIFE



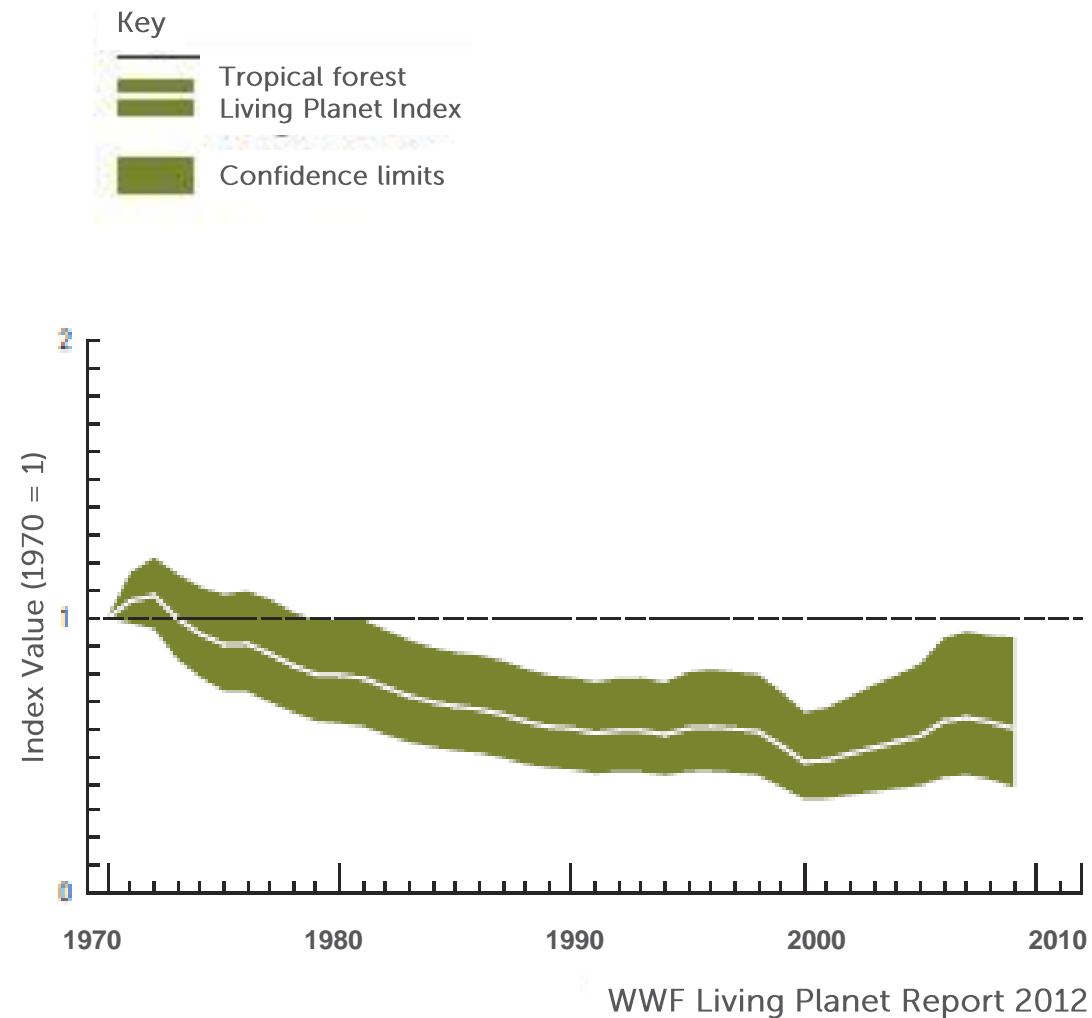
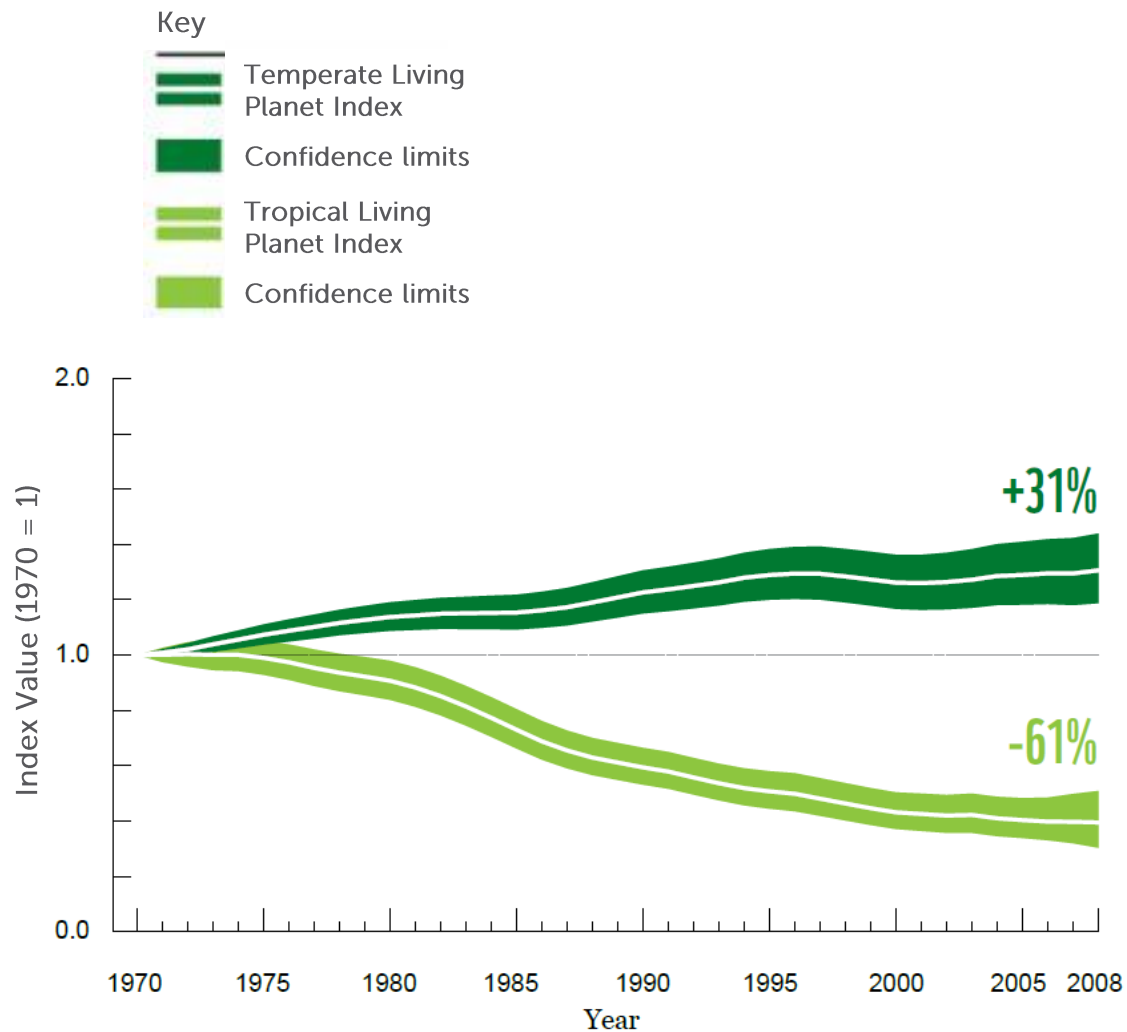
KELOLA SENDANG: A PUBLIC-PRIVATE-PEOPLE PARTNERSHIP MODEL DRIVING IMPACTS THROUGH INNOVATION & PARTNERSHIPS

Izabela Delabre

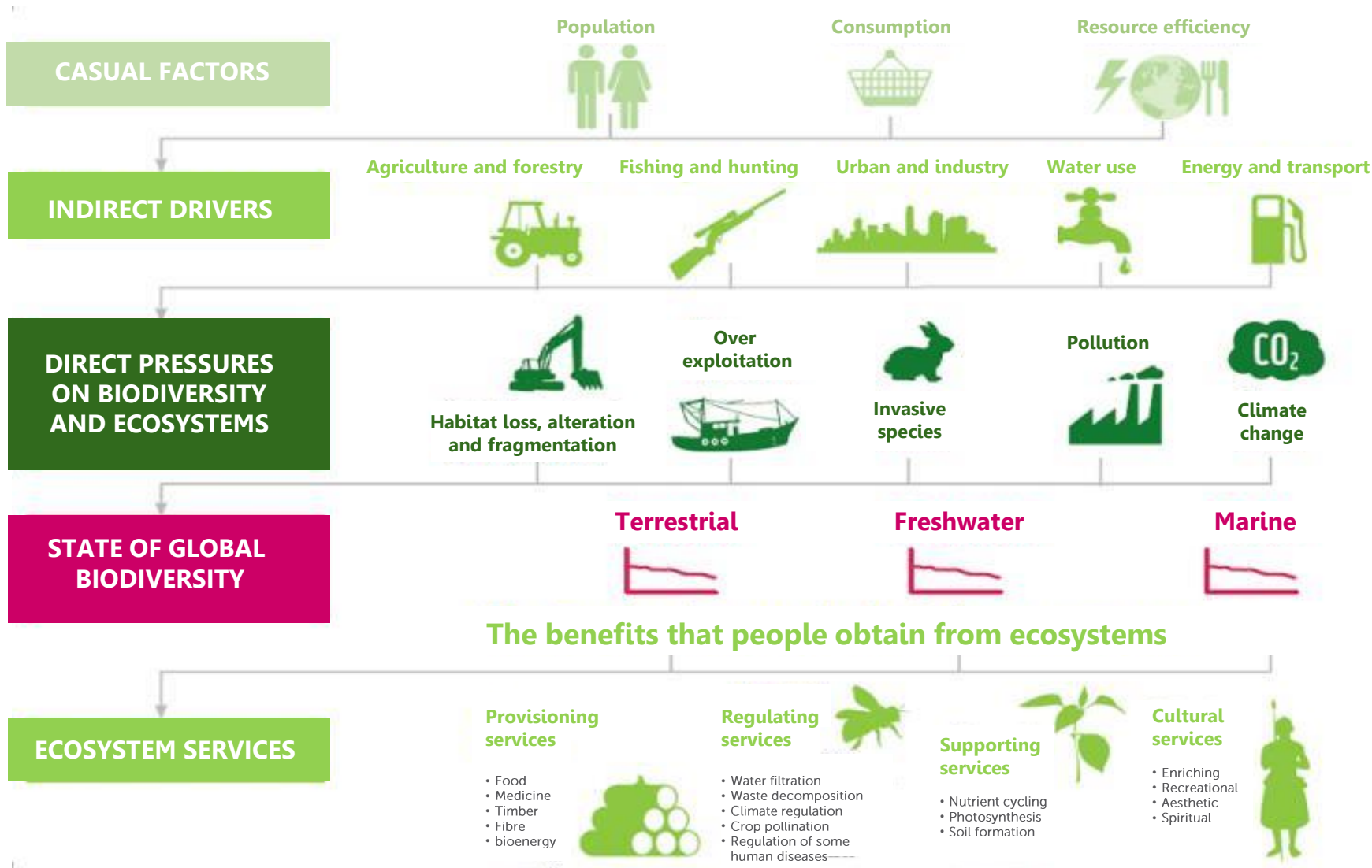
Zoological Society of London (ZSL)
@ZSLSPOTT @izabela_sta

ZSL
LET'S WORK
FOR WILDLIFE

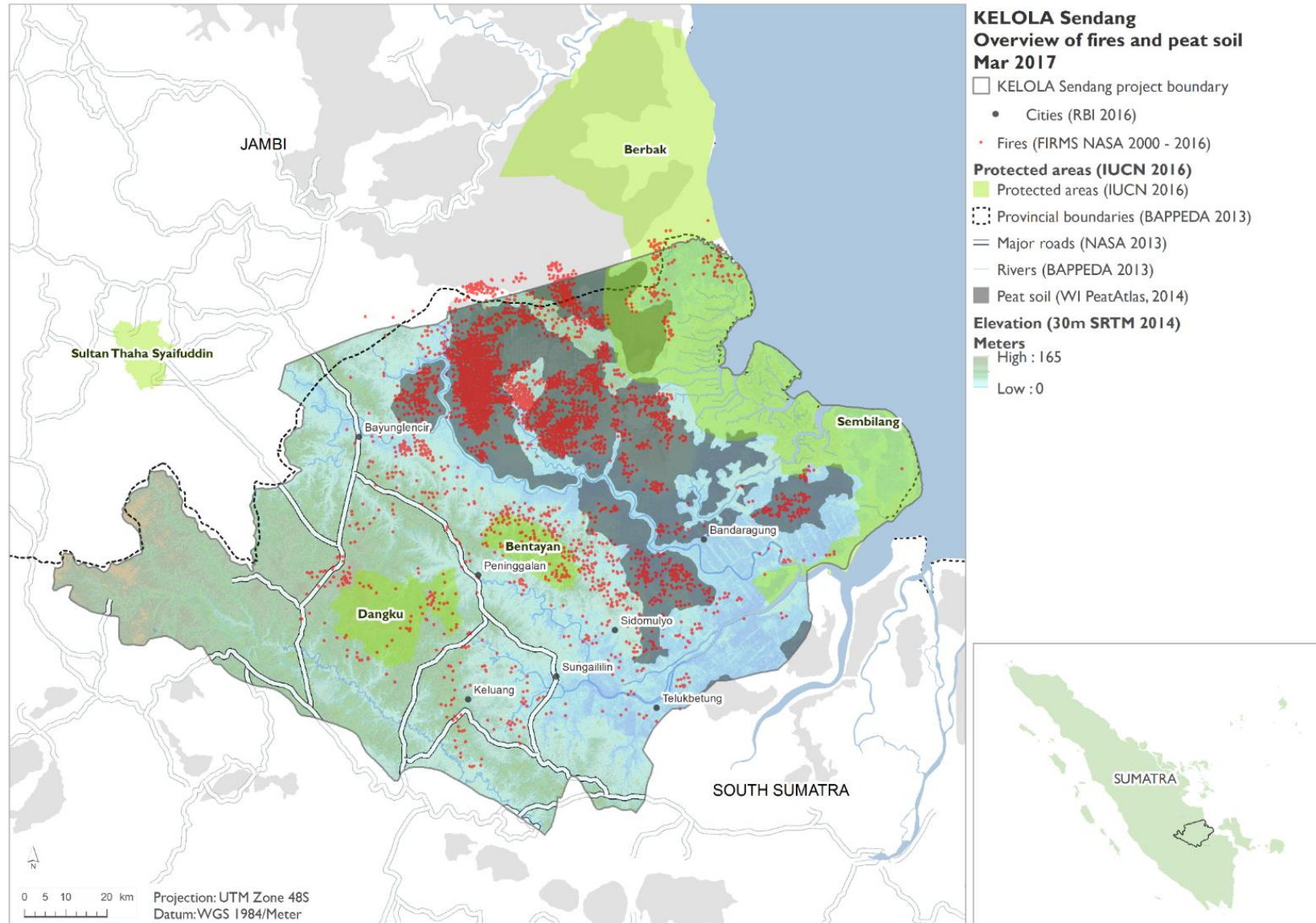
Tropical Biodiversity Is In Decline



Complex Drivers And Pressures

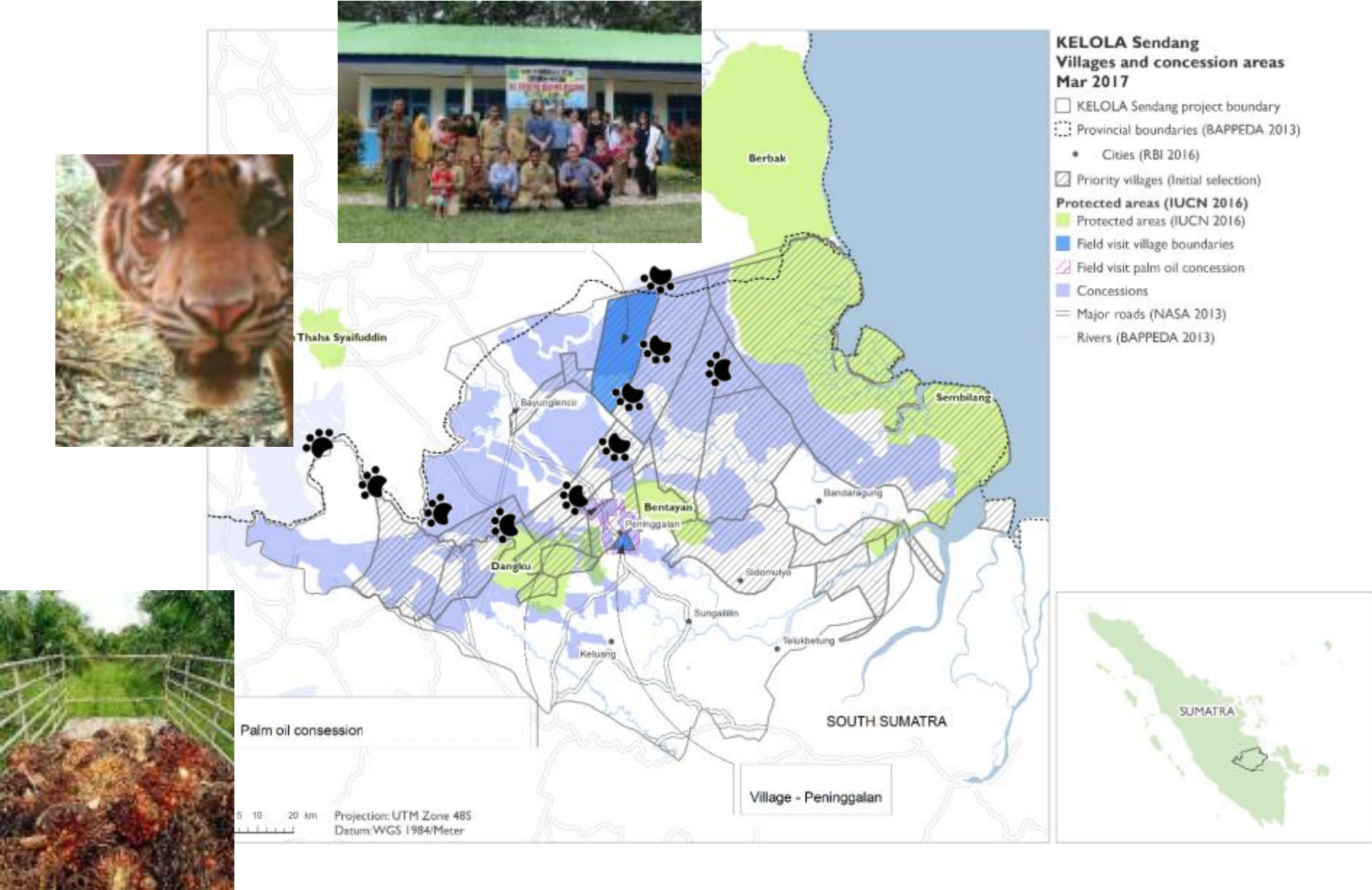


KELOLA Sendang (KEmitraan PengeLOlaan LAnskap)





Sustainable Landscape Management



EUROPEAN ROUNDTABLE
JUNE 12-13 2017 | LONDON



GOLD PARTNERS



European
Palm Oil Alliance

RECEPTION PARTNER

CRODA

SILVER PARTNERS



EXHIBITORS



ZSL
LET'S WORK
FOR WILDLIFE



BIODIVERSITY CONSERVATION : BEYOND REGULATION

Dr. Ir. Jamartin Sihite

BOS Foundation
@Bornean_OU

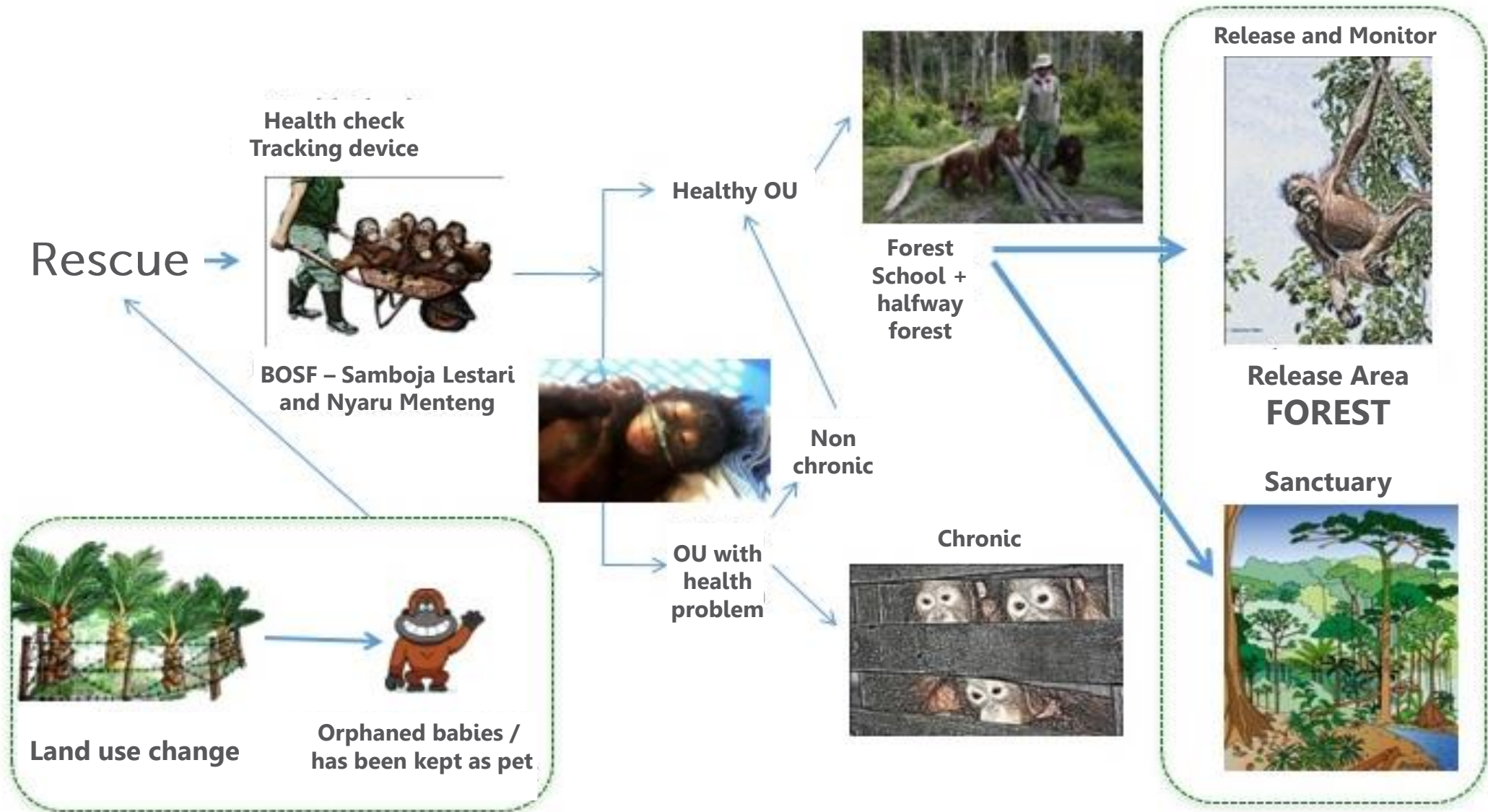
Partnership - Best Management Practices



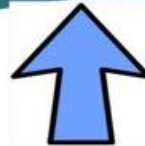
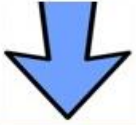
- For orangutans to survive, palm oil companies need to help protect the species
- Implement orangutan conservation management within concession areas
- BOS Foundation team conducts assessments, make recommendations, and provide technical assistance on Best Management Practices



Phases Of The Orangutan Rehabilitation Process



Many orangutans stranded due to
land clearing

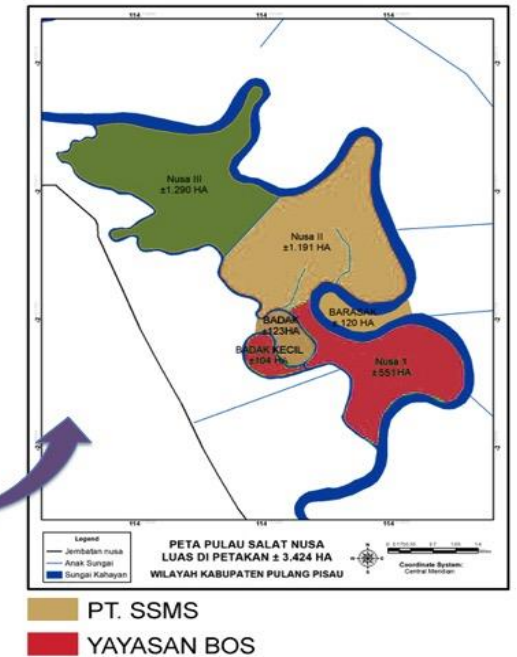


Limited forest available for release
creates a bottleneck

Partnership - Salat Island, Central Kalimantan



- Located in Pulang Pisau District, in the heart of Borneo, between the Kahayan River (East) and Nusa River (West), Central Kalimantan Province
- In total, the area that we utilize covers 2,089 ha
- Salat island has:
 - suitable intact natural forest → isolated from the mainland all year-round
 - no wild orangutan population
 - sufficient orangutan food sources
 - adequate carrying capacity to support large numbers of orangutans as they adapt to life back in the forest

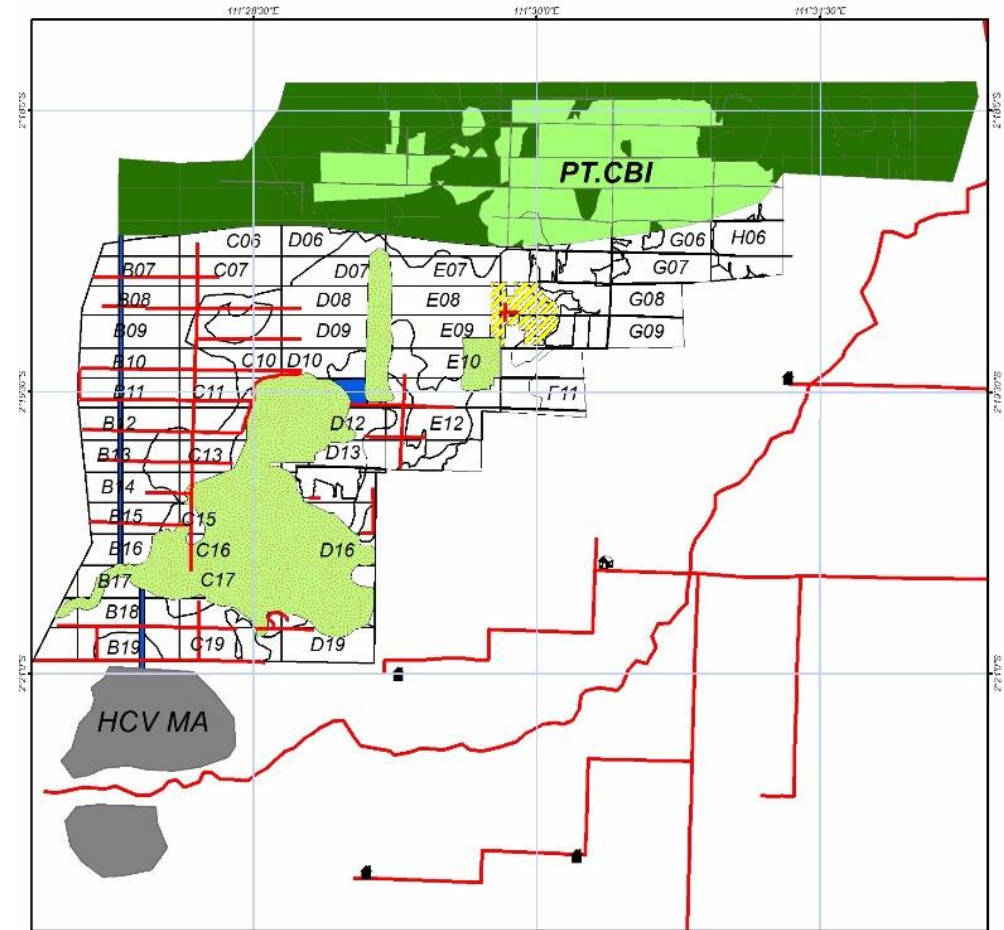
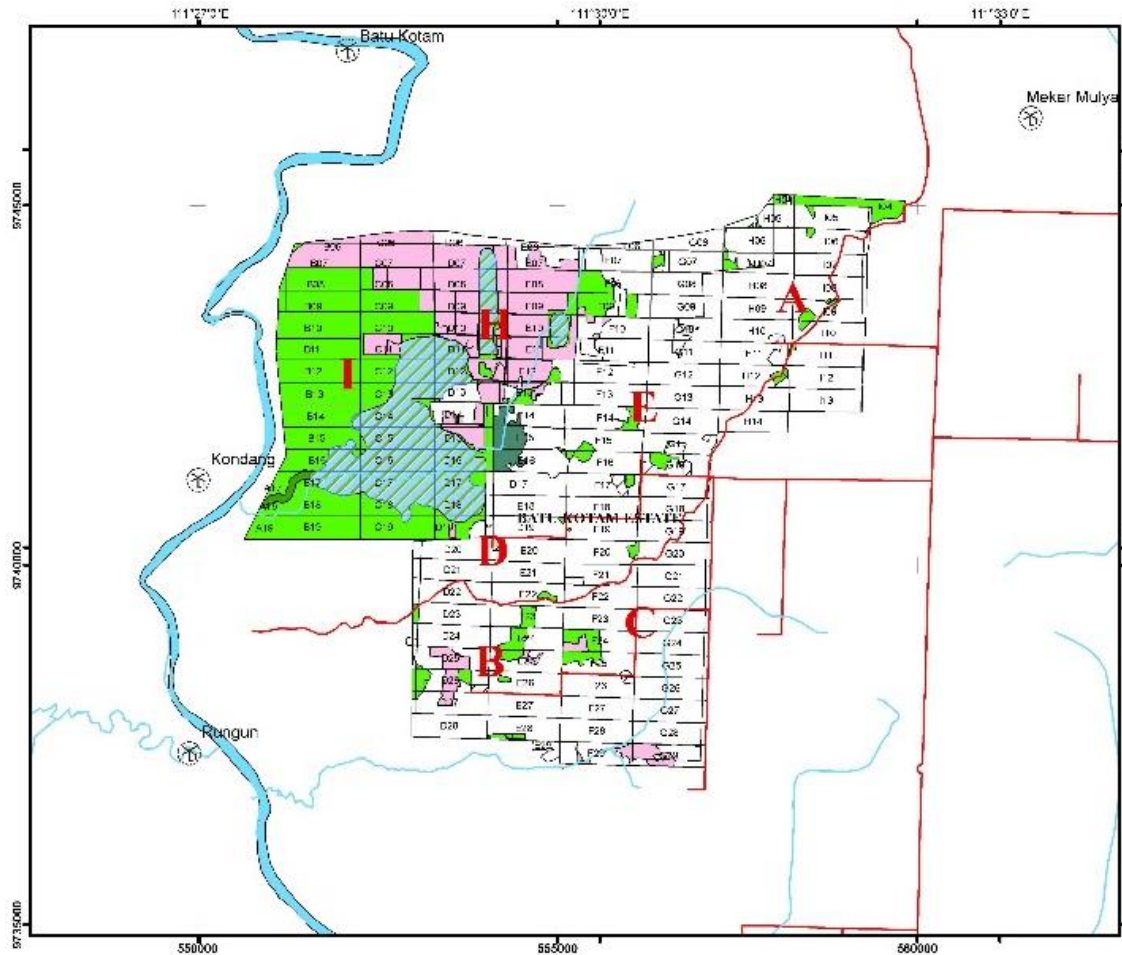


Partnership – Main Impact

- This pre-release island utilisation is achieved through partnership and creates the opportunity for more frequent orangutan reintroductions

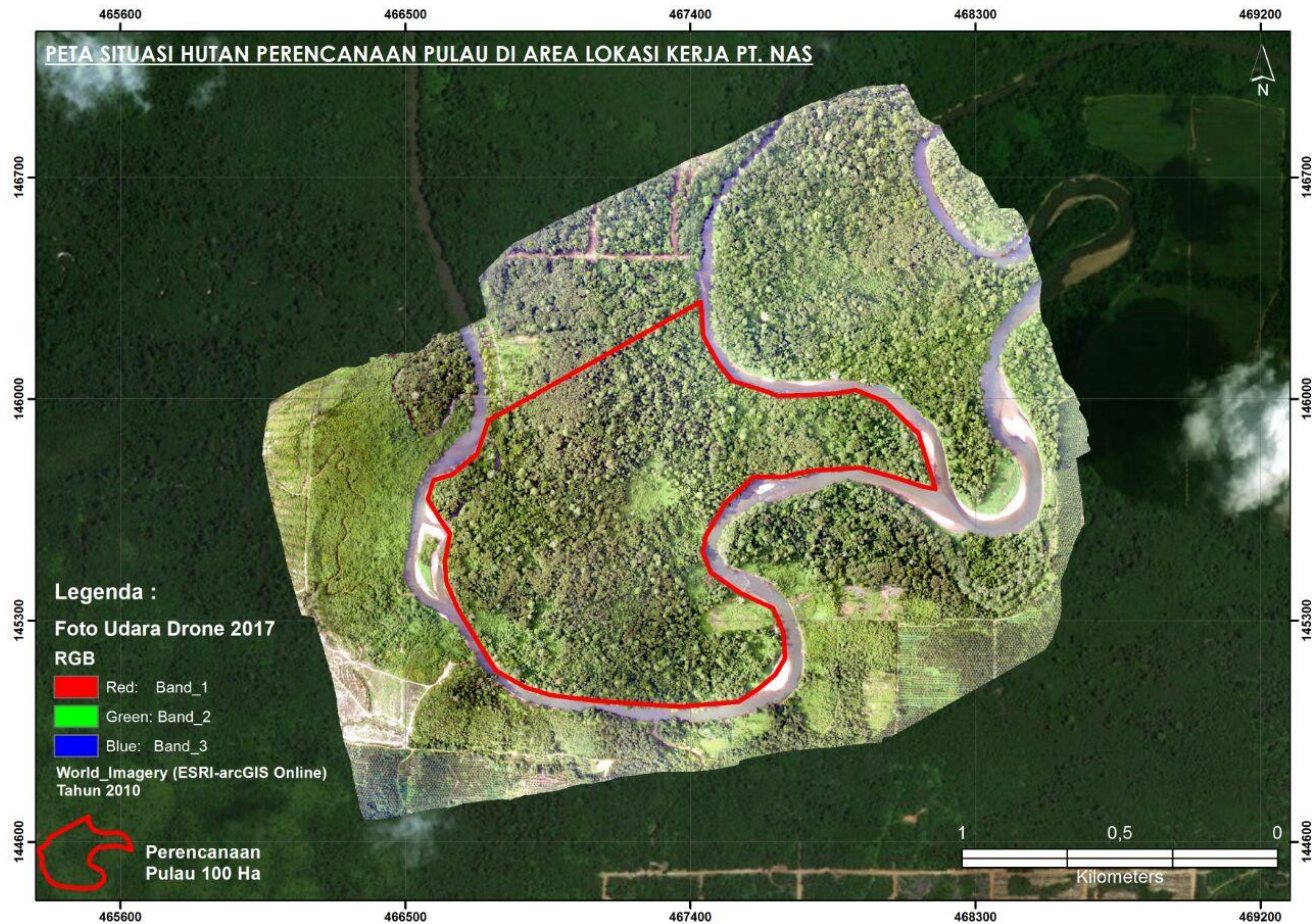


Partnership – Expansion of HCVF Area in PT. KSA, Central Kalimantan



Prior to our Partnership, PT. KSA had allocated 355 hectares as a conservation area. Following our survey and recommendations, it now allocates 550.89 hectares of conservation area.

Partnership - PT NAS Island, East Kalimantan



Shared Development of a Conservation Area

- Partnership creates a better landscape
- It creates awareness to provide more HC VF area from neighbouring concession projects



EUROPEAN ROUNDTABLE
JUNE 12-13 2017 | LONDON



THANK YOU

EUROPEAN ROUNDTABLE
JUNE 12-13 2017 | LONDON



GOLD PARTNERS



European
Palm Oil Alliance

RECEPTION PARTNER

CRODA

SILVER PARTNERS



EXHIBITORS



ZSL
LET'S WORK
FOR WILDLIFE



DRIVING IMPACTS THROUGH INNOVATIONS AND PARTNERSHIPS

Kendra Park Pasztor

Monitoring & Evaluation, Better Cotton Initiative
@BCICotton

BCI Better Cotton Initiative
www.bettercotton.org

CERTIFIED SUSTAINABLE PALM OIL
RSPO™

*2016-17 season projections

BCI's **mission** is to make global cotton production better for the people who produce it, better for the environment it grows in, and better for the sector's future.

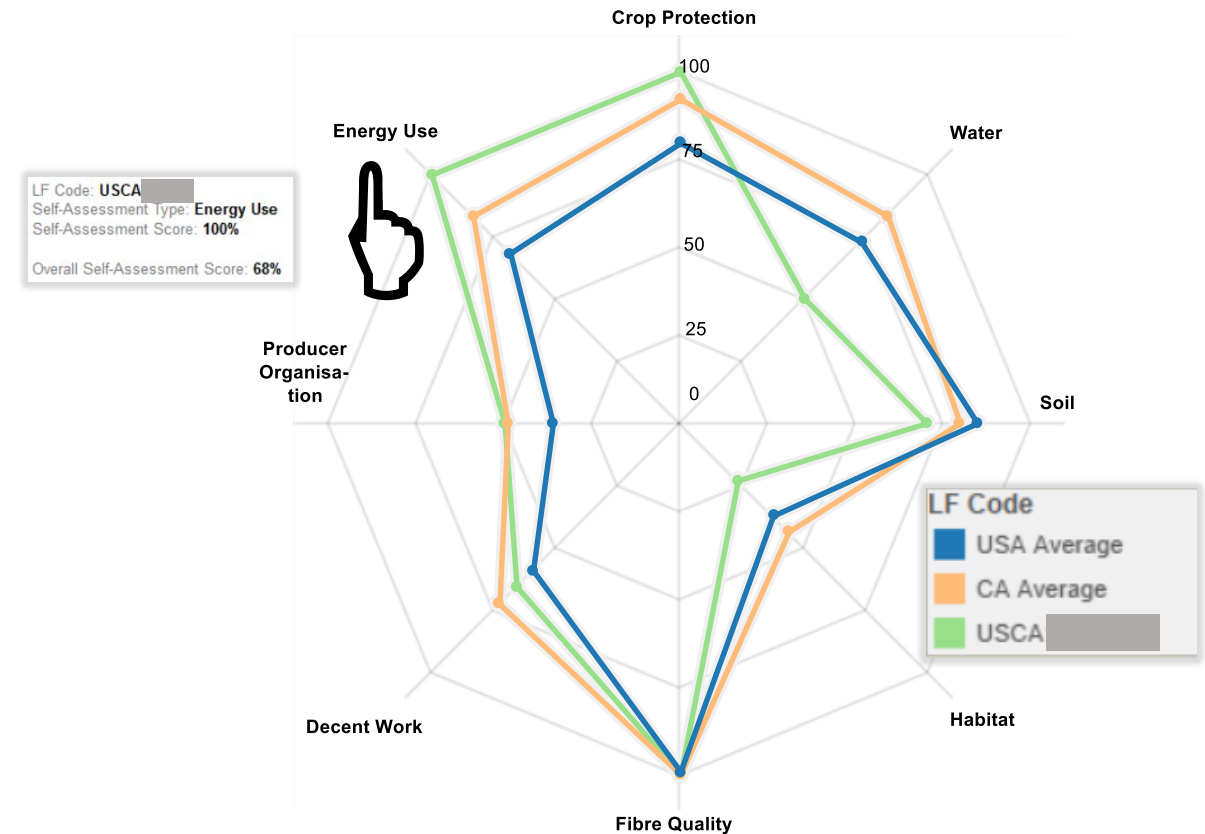
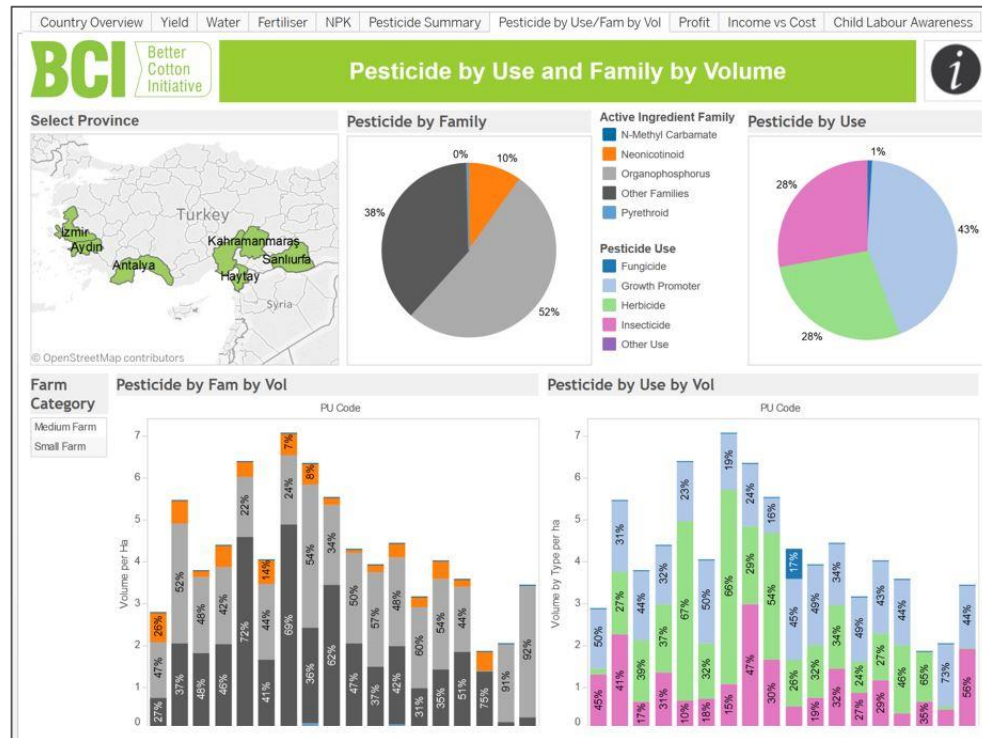
Our **vision** is transformation of the sector to make cotton a sustainable mainstream commodity.

- **Inclusive** – small-scale to large-scale; lowest to highest performers
- **Continuous improvement** is how we measure success

Partnership is critical to achieving impact

Innovation Through Partnerships

- Diverse partnerships, depending on region and context
- Constitutes network of like-minded actors
- Key to reaching smallholders



Thank You



Panel Debate: Driving Impacts Through Innovation & Partnerships



Moderated by: Eliza Anyangwe

Ms. Kristin Komives – Director of Impacts, ISEAL Alliance

Dr. Anne Rosenbarger – Southeast Asia Commodities Manager on Global Forest Watch, World Resources Institute

Dr. Izabela Delabre – SPOTT Palm Oil Manager, Zoological Society of London

Dr. Jamartin Sihite – CEO, BOS Foundation

Ms. Kendra Pasztor – Monitoring & Evaluation Manager, Better Cotton Initiative

GOLD PARTNERS



European
Palm Oil Alliance

RECEPTION PARTNER

CRODA

SILVER PARTNERS



EXHIBITORS



ZSL
LET'S WORK
FOR WILDLIFE

EUROPEAN ROUNDTABLE
JUNE 12-13 2017 | LONDON



GOLD PARTNERS



European
Palm Oil Alliance

RECEPTION PARTNER

CRODA

SILVER PARTNERS



EXHIBITORS



ZSL
LET'S WORK
FOR WILDLIFE