

EUROPEAN ROUNDTABLE
JUNE 12-13 2017 | LONDON



GOLD PARTNERS



**European
Palm Oil Alliance**

RECEPTION PARTNER

CRODA

SILVER PARTNERS



EXHIBITORS



ZSL
**LET'S WORK
FOR WILDLIFE**



PANEL DEBATE: THE RENEWED WAY FORWARD FOR SMALLHOLDERS WITH RSPO



PANEL DEBATE: THE RENEWED WAY FORWARD FOR SMALLHOLDERS WITH RSPO

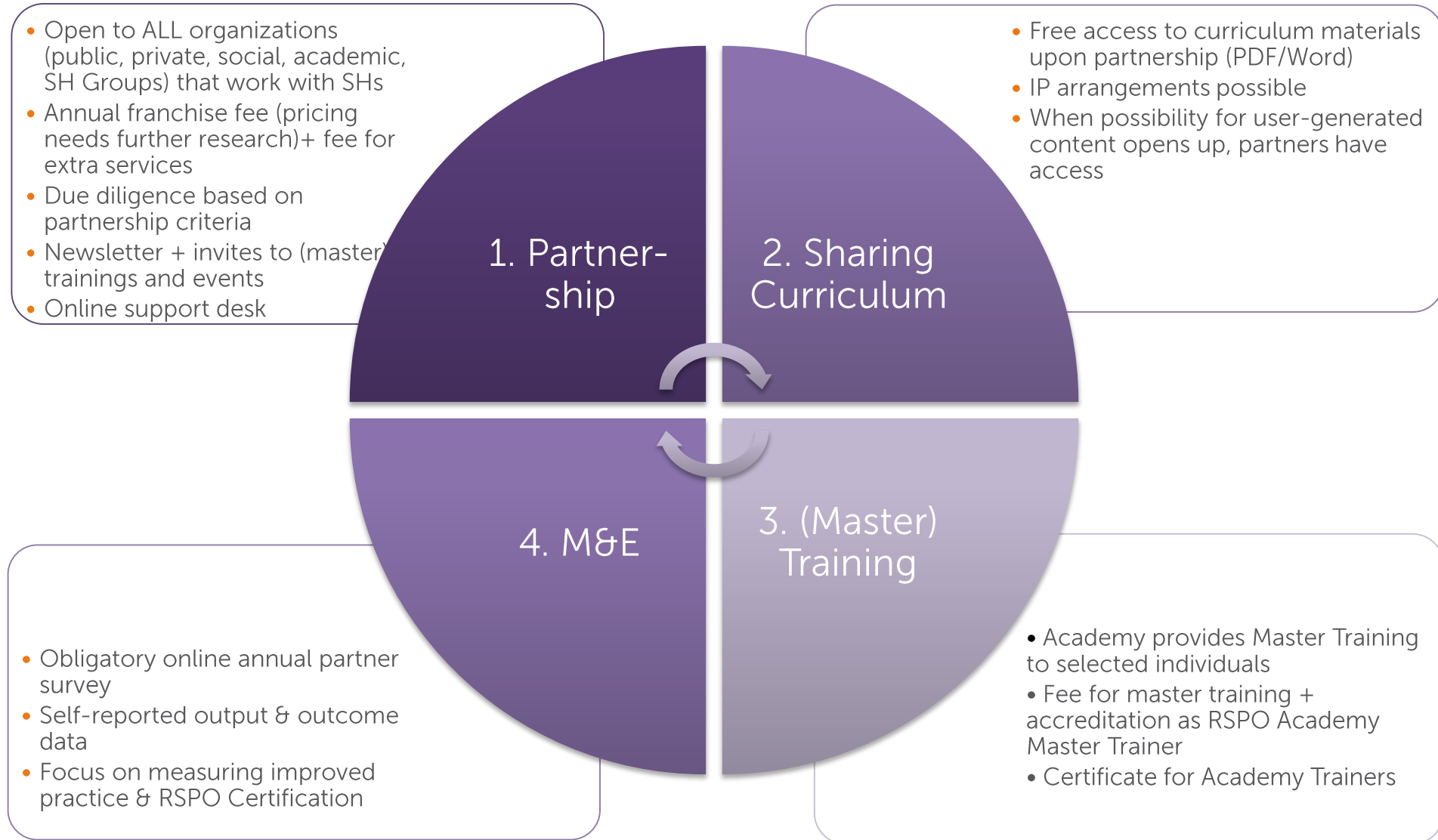
Simon Bailey

Director of Partnerships and Innovation, Aflatoun International

RSPO Smallholder Academy

Social Franchise Model

Presentation EURT, June 2017



THANK YOU

www.rspo.org

EURT, June 2017

EUROPEAN ROUNDTABLE
JUNE 12-13 2017 | LONDON



GOLD PARTNERS



European
Palm Oil Alliance

RECEPTION PARTNER

CRODA

SILVER PARTNERS



EXHIBITORS



ZSL
LET'S WORK
FOR WILDLIFE



THE RENEWED WAY FORWARD FOR SMALLHOLDERS WITH RSPO

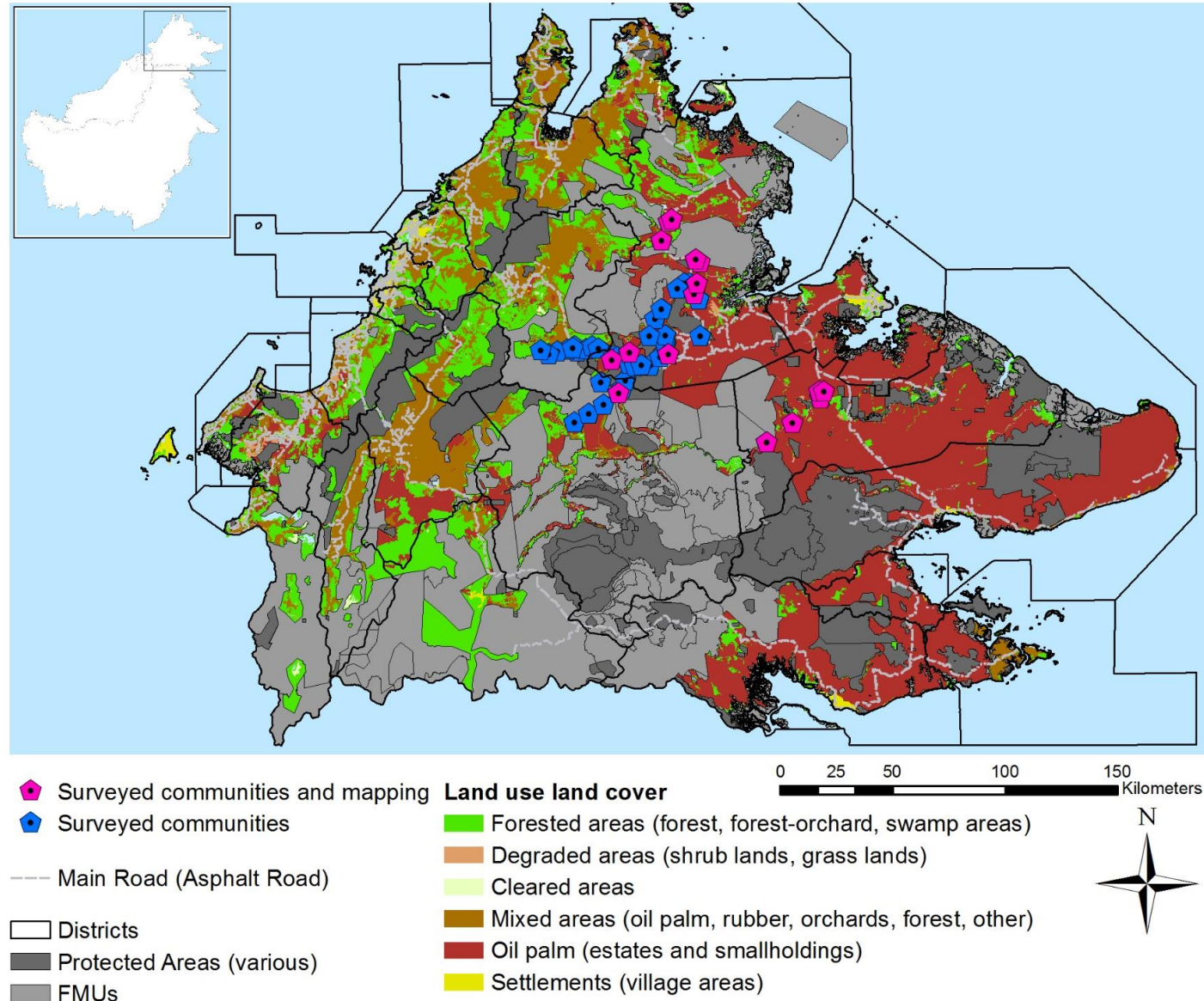
Cynthia Ong

Executive Director, LEAP – Land Empowerment Animals People

Sabah's Jurisdictional Certification Of Smallholders



- 86% HH plant OP/ half only OP
- 80% use fire
- 78% post 2005
- 50% on LA
38% NT
rest "unknown"
- 65% rights to FR
- Most depend on forests (88%/79%)
- 13% still have F
- Yield 0.5 ton/ha/m
- HH income EU240-575 with most at low end
- 47% little training
- 80% chemicals



- TTBK trial area
- 4 districts/
20 sample villages/
1724 smallholders
- 3-tiered framework
- Village clusters, districts, state
- Agronomic support for best practices
- Land legalities & Licensing, FPIC
- HCV+HCS+RaCP, labour
- From 4 to 24 hubs
- State
- = Jurisdiction

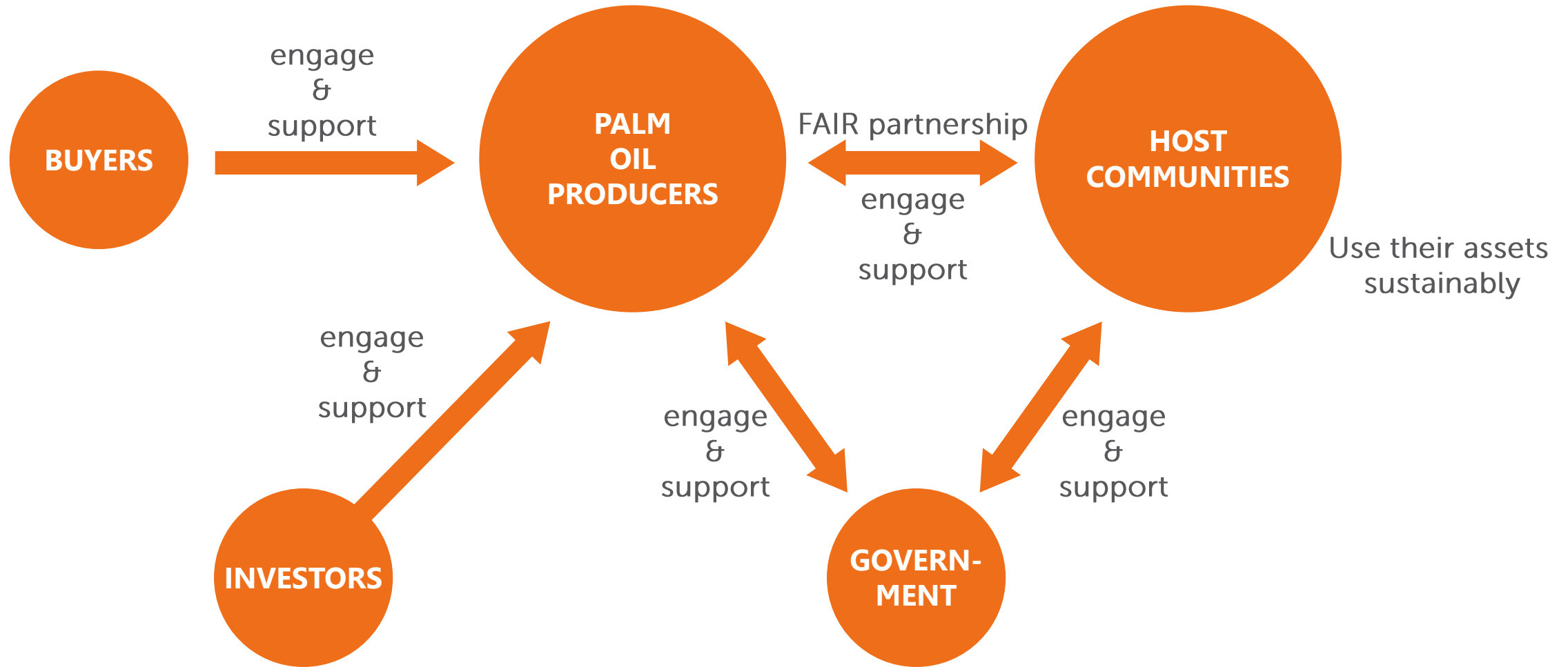


THE RENEWED WAY FORWARD FOR SMALLHOLDERS WITH RSPO

Johan Verburg

Pro-Poor Value Chains Advisor, Oxfam Novib

Stakeholders In Fair Partnerships



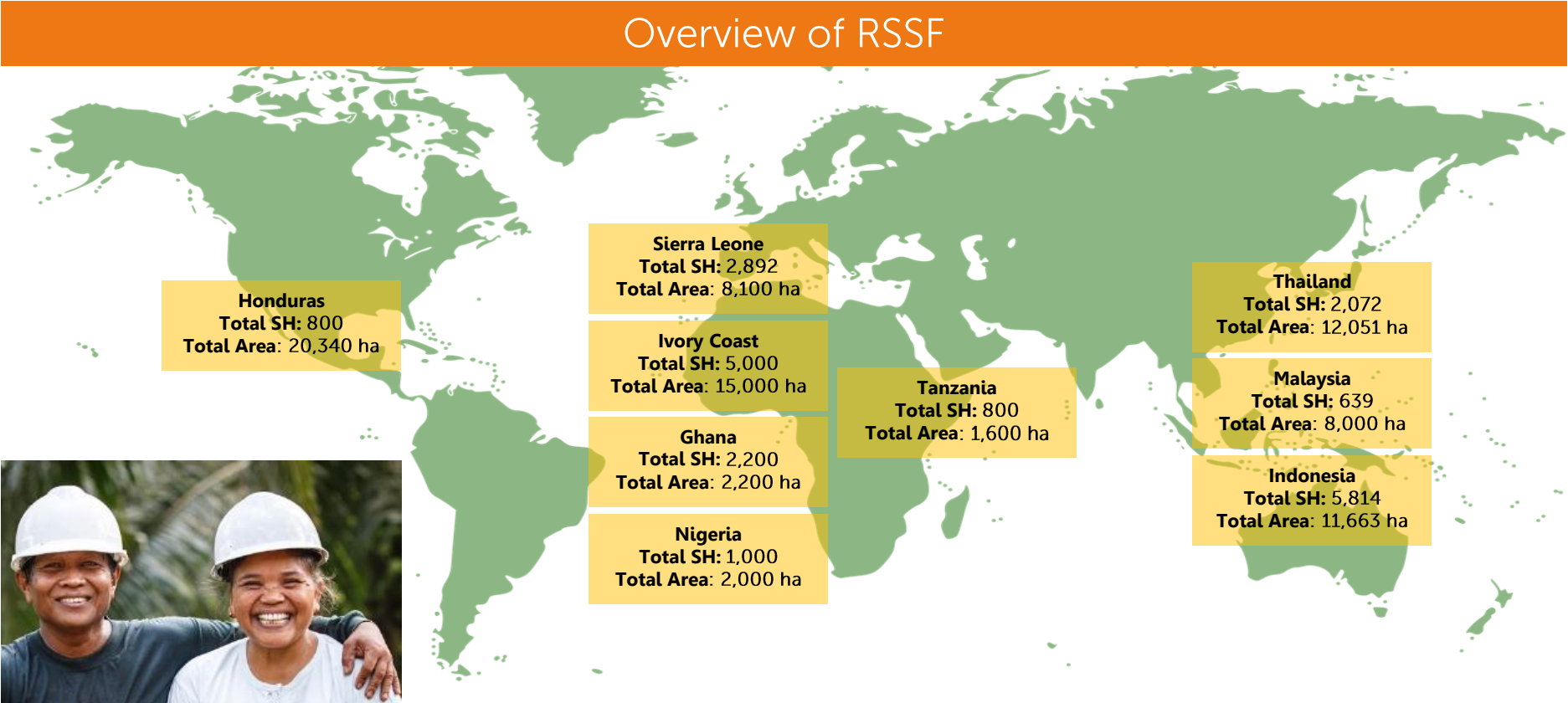


THE RENEWED WAY FORWARD FOR SMALLHOLDERS WITH RSPO

Julia Majail

Smallholders Programme Manager, RSPO Secretaria

RSPO Smallholder Support Fund



EUROPEAN ROUNDTABLE
JUNE 12-13 2017 | LONDON



GOLD PARTNERS



European
Palm Oil Alliance

RECEPTION PARTNER

CRODA

SILVER PARTNERS



EXHIBITORS



ZSL
LET'S WORK
FOR WILDLIFE